


OFFICER DELEGATION SCHEME RECORD OF OPERATIONAL DECISION



TO BE UPLOADED TO THE E-MEETINGS MANAGER

Date: 20/10/20	Ref No: 299	
Type of Operational Decision:		
Executive Decision	<input checked="" type="checkbox"/>	Council Decision
Status: For publication		
Title/Subject matter: Clark's Hill/Oakhurst Gardens, Prestwich – Proposed Extension of No Waiting at Any time		
Budget/Strategy/Policy/Compliance – Is the decision:		
(i) within an Approved Budget	√	
(ii) not in conflict with Council Policy	√	
(iii) not raising new issues of Policy	√	
Equality Analysis [Does this decision change or make policy; change or make procedure or working practice? An Equality Analysis must be completed to assess the impact on equality and the relevance of the Public Sector Equality Duty. This should be signed off by your departmental equality representative and accompany this decision form. Please forward a copy to the Equality email for publication].	No	
	Signed: (By EA Officer)	Date:
Details of Operational Decision Taken [with reasons]: No objections were received following the advertisement of proposals for the extension of No Waiting at Any time restrictions on Clark's Hill/Oakhurst Gardens, Prestwich, therefore the proposal is to be introduced as advertised. The restrictions are proposed in order to remove obstructive parking and assist traffic movements and refuse collections.		
Decision taken by:	Signature:	Date:
D R Giblin Head of Engineering		20/10/2020
Members Consulted [see note 1 below]		
Cabinet Member/Chair		
Lead Member		

Notes

1. It is not generally a requirement to consult with any Members on Operational Decisions but where an Executive Director considers it necessary to consult with the appropriate Cabinet Member and/or Lead Member, they must sign the form so as to confirm that they have been consulted and that they agree with the proposed action. The signature of the Opposition Spokesperson should be obtained to confirm that he/she has been consulted.
2. **This form must not be used for urgent decisions.**

STATEMENT OF COUNCIL'S JUSTIFICATION

TM2/20/472:- Clark's Hill/Oakhurst Gardens, Prestwich

Over recent years the Council has received a number of complaints relating to parking on Clark's Hill, which provides access to the Oakhurst Gardens Apartments.

Following concerns which were raised regarding visibility and parking at the junction of Clark's Hill and Rectory Lane, junction protection restrictions were introduced in 2014 to improve visibility and turning movements.

Since the restrictions were introduced, concerns have been raised on a number of occasions regarding remaining parking on Clark's Hill. Vehicles tend to park fully on the carriageway on one side of Clark's Hill, which can be adequately accommodated. However, vehicles continue to park on the opposite side of Clark's Hill, but given the road width, tend to park partly on the footway.

Parking on both sides, depending on the vehicles size and their exact location does on occasion hinder access to/from the car park for the Oakhurst Gardens Apartments, and given the bin store for the apartments is also on Clark's Hill, can also affect refuse collections.

This was discussed by the Traffic Management Unit at its meeting of 03 December 2019, the decision being to recommend the extension of No Waiting at Any time restrictions on Clark's Hill/Oakhurst Gardens, Prestwich to remove double parking and aid access to properties.

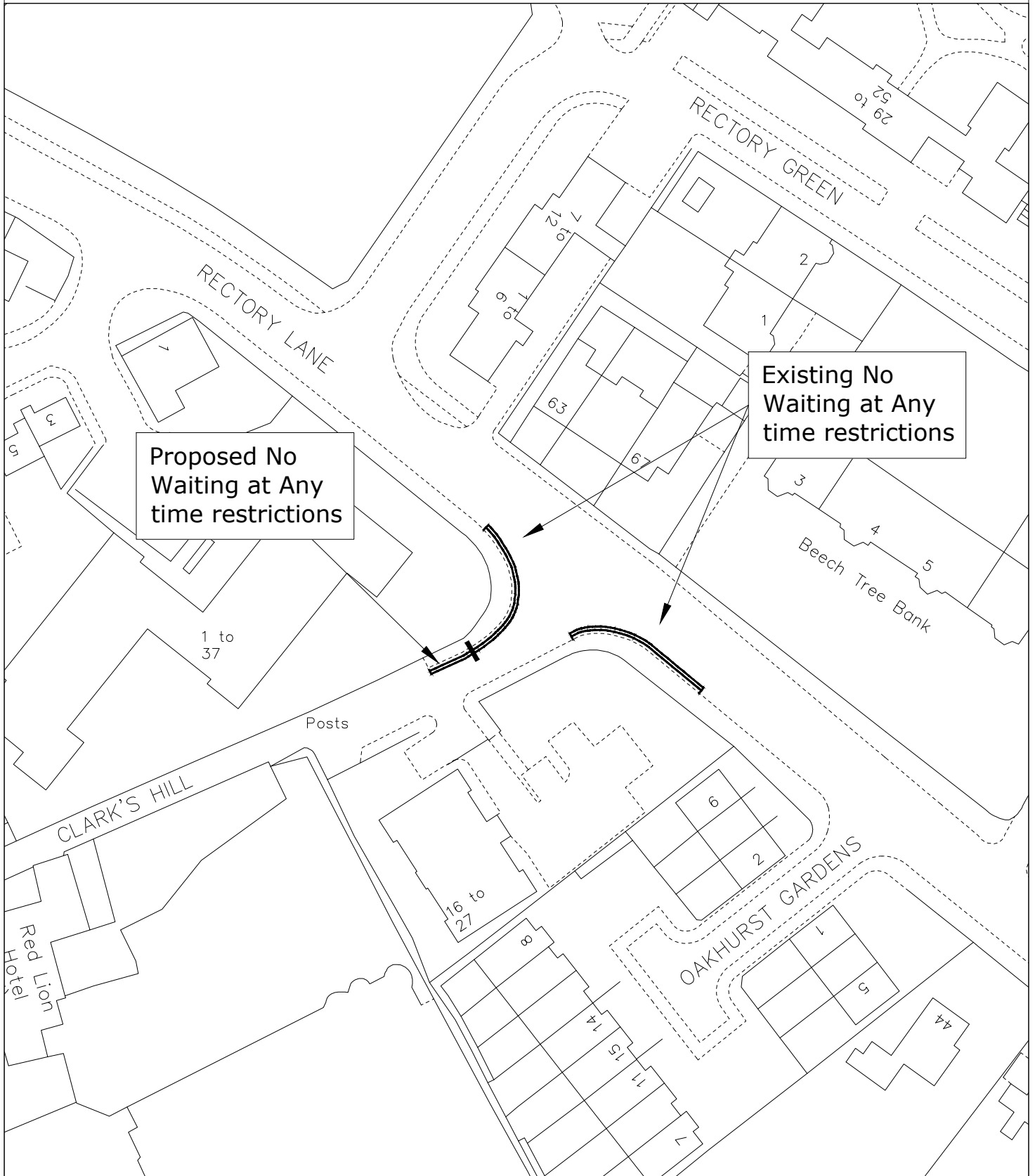
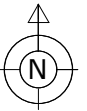
The extent of the proposed restrictions are described in the accompanying schedule.

SCHEDULE

Extension of No Waiting at Any time

Clark's Hill, Prestwich – northwest side from a point 15m west of the south westerly kerbline of Rectory Ln for a distance of 8.5m in a south westerly direction

Clarks Hill, Prestwich Restrictions Plan



© Crown Copyright and database right 2014. Ordnance Survey 100023063

PLAN TM9044
DATE 07.11.19
DRAWN KLM
SCALE NTS

DEPARTMENT OF OPERATIONS

3 Knowsley Place
Duke Street,
BURY BL9 0EJ

Tel: 0161 253 5353

Bury
COUNCIL

PHOTOGRAPHIC COPY LIABLE TO DISTORTION IN SCALE